



SORA
BOTANICAL GARDEN Project

Works of Seijun NISHIHATA

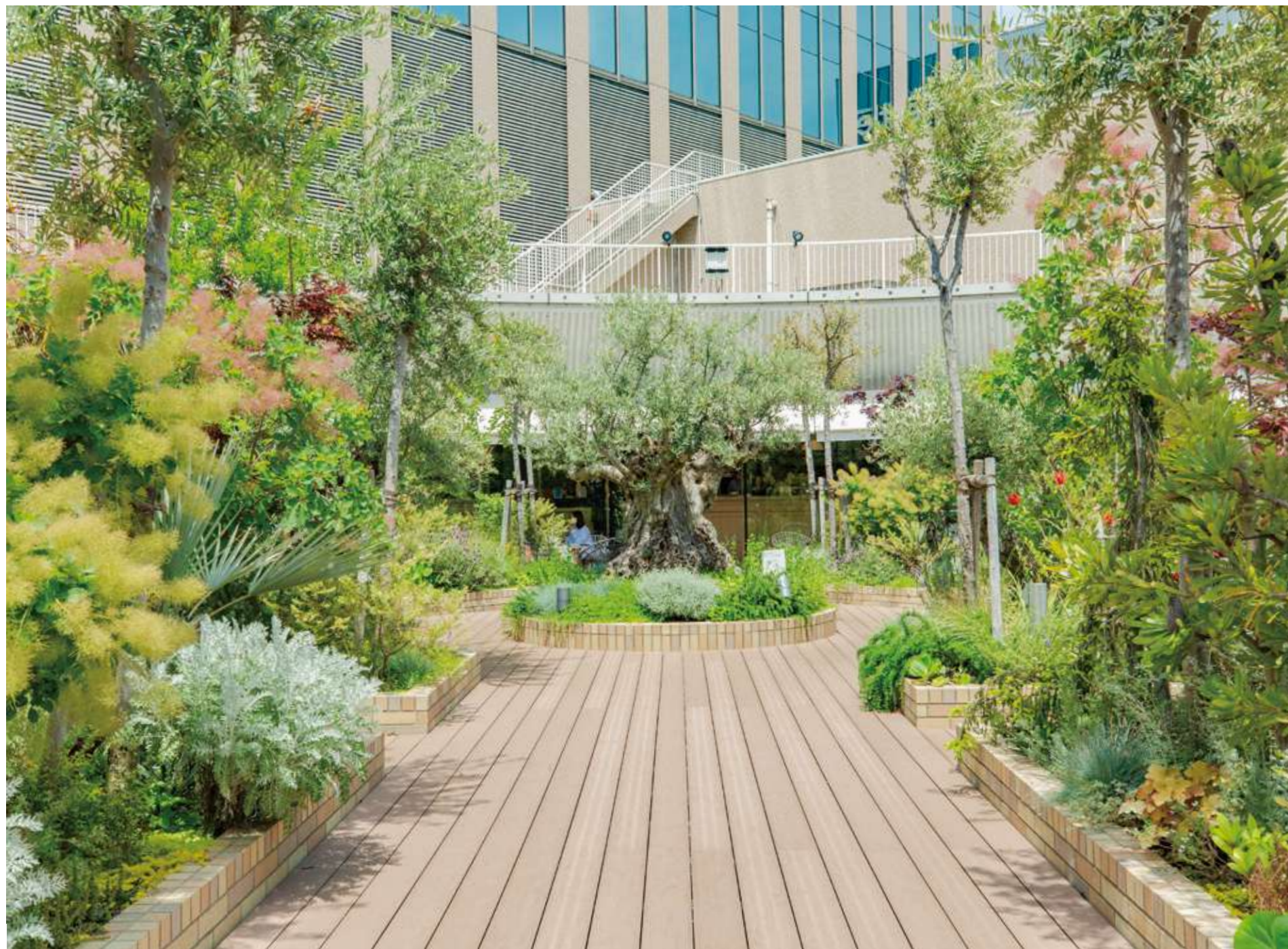
Landscape Design / Advisory / Construction



Symbolic garden of landmark architecture in Kobe city was built to commemorate the recovery from the Great Hanshin-Awaji Earthquake.

KOBE INTERNATIONAL HOUSE - 2015
Credit : Kobe City

Kobe, Japan



KOBE INTERNATIONAL HOUSE - 2015
Credit : Kobe City



Landscape design and construction for the most talked-about huge commercial complex in 2021, erected by KADOKAWA as a sacred place for Japanese animation.

TOKOROZAWA SAKURA TOWN - 2020
Credit : KADOKAWA CORPORATION / KADOKAWA Culture Promotion Foundation



TOKOROZAWA SAKURA TOWN - 2020
Credit : KADOKAWA CORPORATION / KADOKAWA Culture Promotion Foundation



Landscape design and construction of the main garden for global distribution developer Goodman's huge facility, which also houses Google's data centre.



©Kawasumi • Kobayashi Kenji Photograph Office.



Participated as advisor for the planting and exterior design of the Hyatt Place Tokyo Bay building project.

HYATT PLACE TOKYO BAY - 2019

Chiba, Japan



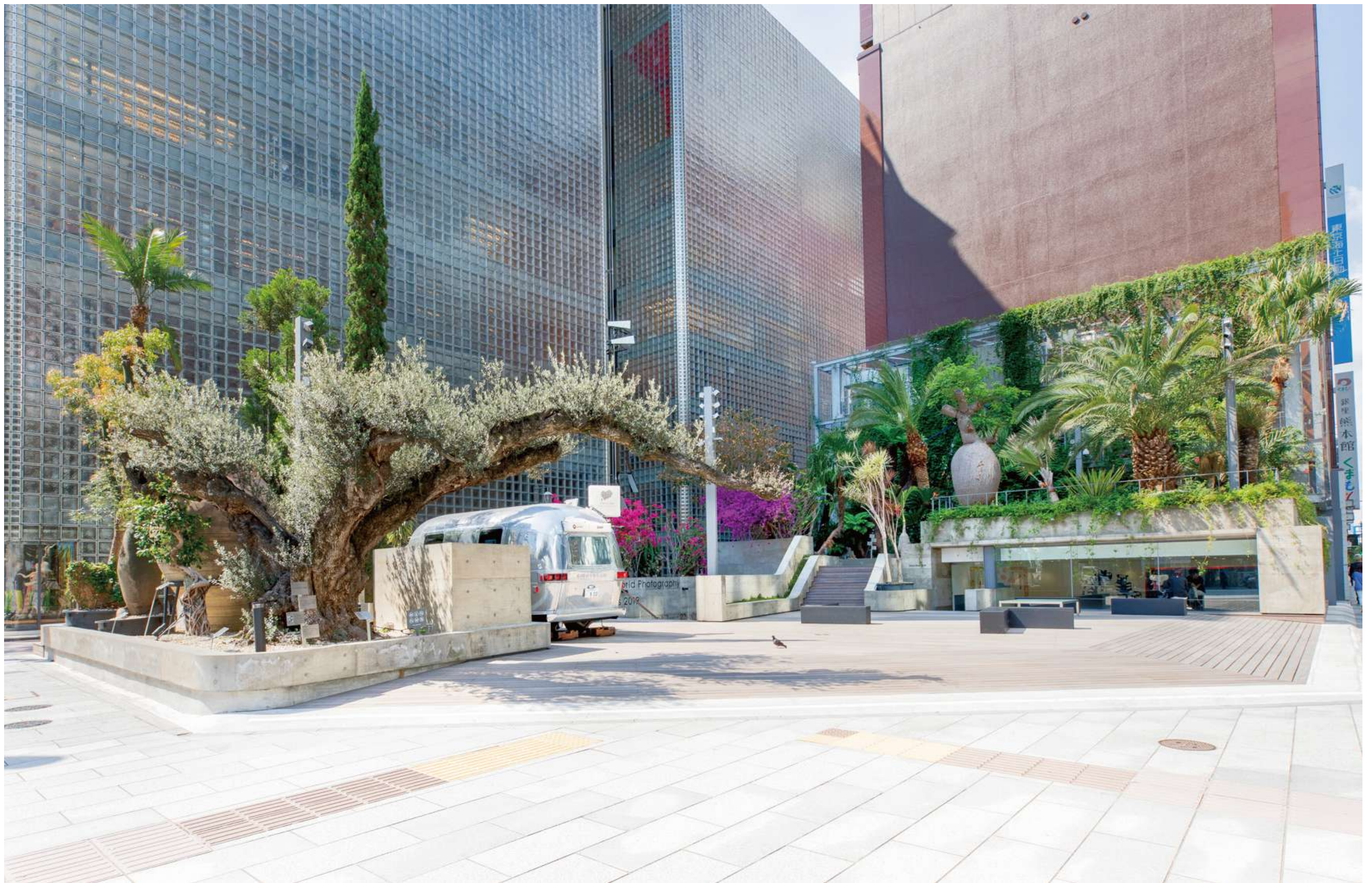
Bold amounts of green interior planting were provided for the public areas of Tokyo EDITION by Marriott, a new generation luxury lifestyle hotel in the heart of Toranomon, Tokyo.

The Tokyo EDITION, Toranomon - 2020
Credit : MORI TRUST CO., LTD. / The Tokyo EDITION, Toranomon



Concept is 'FENDI meets organism by Ikebana' created entirely from organic materials and method of modern japanese flower arrangement. This produced the store decoration for the FENDI store that opened in Omotesando, Tokyo,

FENDI Omotesando - 2017



Ginza Sony Park, a two-year limited project,
is located at one of Japan's most famous intersections and this project was awarded at "iF Design Award 2020 (Gold),
the top prize in the architecture category", recieved a prestigious international design award.

GINZA SONY PARK - 2018
Credit : Sony Enterprise Co.,Ltd / AWO GINZA TOKYO



A nine-year limited edition garden project that has revolutionised urban greening in Tokyo.
An example of the co-existence of plants from all over the world in the middle of Tokyo. It became one of the most famous spots, attracting 400,000 visitors per year.

YOYOGI VILLAGE by kurkku - 2012



YOYOGI VILLAGE by kurkku - 2012
Credit : Takeshi Kobayashi / Masamichi Katayama / SAPIX YOZEMI GROUP / KURKKU Ltd.



One of the largest urban redevelopment projects in Tokyo by Mitsui Fudosan Group in 2015 as a garden city.
Landscape design and direction under the concept of “organic city.”

PARK CITY OSAKI - 2015
Credit : Mitsui Fudosan Co., Ltd. / NIHON SEKKEI, INC.



PARK CITY OSAKI - 2015
Credit : Mitsui Fudosan Co., Ltd. / NIHON SEKKEI, INC.



©teamLab, 2019, Interactive Digital Installation, Endless, Sound: Hideaki Takahashi
 ©teamLab, 2017, Interactive Digitized Nature, Sound: Hideaki Takahashi

Producing of a renewal project for the Tokiwa Botanical Garden, located in the vast Tokiwa Park.
 The park was also known as the site of Japan's first open-air sculpture exhibition.

UBE Tokiwa Museum Renewal Open - 2017
 Credit : Ube City / teamLab Inc.



Modern Japanese garden at "KAGAYA BETTEI MATSUNOMIDORI," which is launched by Kagaya, the most hospitable inn in Japan

KAGAYA BETTEI MATSUNOMIDORI - 2015
Credit : Kagaya Co., Ltd.



KAGAYA BETTEI MATSUNOMIDORI - 2015
Credit : Kagaya Co., Ltd.



Garden direction for the art pavilion "KOHTEI", an art pavilion built in the precincts of SHINSHOJI Temple, by contemporary artist Kohei Nawa. The Japanese garden and other areas are connected with an impressive landscape of maple trees and autumn-blooming cherry blossoms, created an impressionable scenery.

SHISHOJI ZEN MUSEUM AND GARDENS "KOHTEI" - 2016
Credit : Shinshoji Temple / Kohei Nawa



SHISHOJI ZEN MUSEUM AND GARDENS "KOHTEI" - 2016
Credit : Shinshoji Temple / Kohei Nawa



"Unkai Sakura" garden created with the philosophy for another 100 years at Kyushu National Museum, one of the four national museums in Japan. The area is now famous for its cherry blossoms.

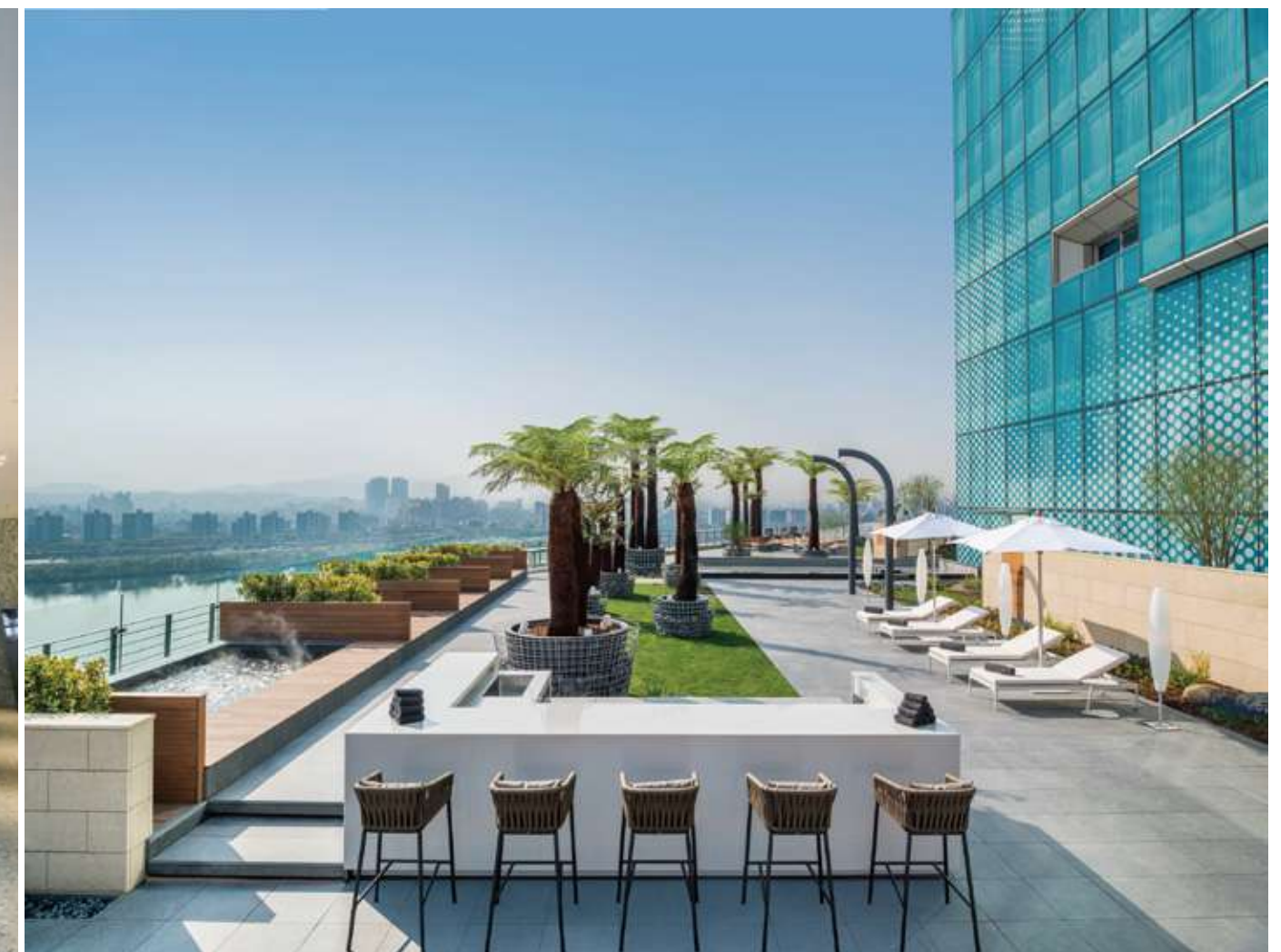
KYUSHU NATIONAL MUSEUM - 2017
Credit : Asian Cultural Exchange Center





Redevelopment project of Large-scale park in Seijun's hometown ,Kawanishi City in Hyogo Prefecture, covering an urban area of approximately 22 hectares, with the keywords "PFI project" and "low-carbon urban development". The park is sorrouned by city hall, hospital, apartment, shoppingcenter, sports facility and culture hall also equipped with a disaster-prevention function to save approximately 2,000 citizens in the event of a disaster.

KISELA KAWANISHI - 2017
Credit : Kawanishi City



Rebranding and renewal project of the hotel which is used to the first W Hotel in Asia built in Wallkerhill to natural concept, in a major resort area in Seoul, Korea.



Newly opened Mediterranean-themed outlet mall in Libao Park, one of Taiwan's leading theme parks. Not only landscape producer, but also, supplying real mediterranean trees and exterior products.



© 2018Peanuts Worldwide LLC

Terrace plantings for special rooms on the top floor of Japan's first PEANUT HOTEL.

PEANUTS HOTEL - 2018
Credit : Peanuts Worldwide LLC



'extraordinary' rooftop garden with a variety of plants from around the world at Atré Ebisu Nishikan, located with one of Tokyo's busiest train stations.

atré Sky Garden - 2016
Credit : East Japan Railway Company / Ric Design Inc.

Tokyo, Japan



Renewal project for Frank Gehry's architecture "FISH" in Kobe Meriken Park.
this collaboration made the restaurant much more prosperas.

FISH IN THE FOREST TOOTH TOOTH x SORA BOTANICAL GARDEN Project - 2017
Credit : Frank Owen Gehry



FISH IN THE FOREST TOOTH TOOTH x SORA BOTANICAL GARDEN Project - 2017
Credit : Frank Owen Gehry



Produced one of the largest cemeteries specialising in tree burials in the country, with a thousand-year-old olive tree as the symbolic tree, a space that is not only a cemetery but also a synergy between the planting plan and the events programme.

Happiness Park Saikaku millennium Olive Forest - 2018

Osaka, Japan



Happiness Park Saikaku millennium Olive Forest - 2018
Osaka, Japan



Created a Japanese garden within a bookshop in the ancient Japanese capital of Nara.
The main plant is changed monthly and shows the seasonal differences.
The design is Inspired by the oldest stone masonry in Japan, the Toin Garden,
which was discovered and recreated in 1967 and is said to be the ancestor of Japanese-style gardens.

NARA TSUTAYA BOOKS - 2020
Credit : Kansai TSUTAYA Co., Ltd.



"AQUILA Square Mile - THE ARTY GREEN METROPOLIS",
a commercial complex built in Tai Kok Tsui in 2022, To tall landscape design and tree supply
which is redeveloped on a large scale by Henderson Land Development,
one of Hong Kong's four major developers.

AQUILA Square Mile – THE ARTY GREEN METROPOLIS - 2022
Credit : Henderson Land Development Company Limited
Hong Kong



AQUILA SQUARE MILE – THE ARTY GREEN METROPOLIS -2022
Credit : Henderson Land Development Company Limited



A large-scale private residence to be built in a certain location in China, with a jpanese traditional garden theme of a circular garden with a forested garden and mountains.



At the headquarters facility of the newly established Panasonic Energy Corporation in April 2022, "Be the Energy that Changes the Future."

The proposed planting plan was realised to visualise the vision of the company,
and to recreate a space where every workers can have a better environment and further environmental awareness.

Panasonic ENERGY - 2022
Credit : Panasonic Energy Co., Ltd.



Installation / Space design / Exhibition /Other



Cherry blossom viewing event held at "Gardens by the Bay", to celebrate the 50th anniversary of diplomatic relations between Japan and Singapore. The project succeeded in exporting cherry trees from Japan at a controlled flowering time. The event created the largest number of visitors record at the time.

Gardens by the Bay "BLOSSOM BEATS" - 2016
Credit : Gardens by the Bay / Prime Minister of Singapore / Government of Singapore



Pop-up shop at Ginza Sony Park for a limited time to celebrate the collaboration between Spanish luxury brand “Loewe” and the legendary “Paula's Ibiza” boutique, “the Paula's Road Trip promotion” that travelled across Japan.

LOEWE Paula's Road Trip - 2019
Credit : LOEWE JAPAN / LVMH JAPAN



Collaboration between the British Royal Warrant ceramics brand 'WEDGWOOD' ,
which timed to coincide with the release of a new plant pot 'the Burlington Pot' made of the material 'jasper' by WEDGWOOD.

WEDGWOOD Exhibition - 2018
Credit : Fiskars Japan Co., Ltd.

Tokyo and Osaka, Japan



Photographer and film director Mika Ninagawa produced a party space based on the concept of "Hanami in Edo" to commemorate the reopening of the Louis Vuitton Omotesando store.

Louis Vuitton Omotesando - 2015
Credit : Mika Ninagawa / Matsuya Onoe



Produced plant decorations for the Centrepont 50th Anniversary charity event to mark the 50th anniversary of Centrepont, a homelessness charity of which the late Princess Diana, now Prince William, is a patron.

Centrepont 50th Anniversary - 2019
Credit : Centrepont



Hollywood actress Gwyneth Paltrow's lifestyle brand goop has arrived in Japan for the first time and created the garden for the limited-time pop-up shop "goop TOKYO pop-up & café" in Tokyo Midtown.

Goop - 2019
Credit : goop by Gwyneth Kate Paltrow / Yasuda International Ltd. / One's Method Co,Ltd.





The installation took place in the main hall of a Kiyomizu-dera temple, which is one of the most famous temple, in Japan. which boasts a history of 1,200 years and is recognised as a World Heritage Site.

Kiyomizu-dera Temple - 2019



"Tree of Life" installation at the main venue of Japan's leading lifestyle events.

HOUSE VISION 2 TOKYO EXHIBITION - 2016
Credit : Kenya Hara / Kengo Kuma & Associates / Sumitomo Forestry Co.,Ltd. / Nippon Design Center, Inc.



An installation with world-reknowned architect Kengo Kuma.
The Japanese traditional chequered pattern was made three-dimensional to express the elements
that are important to people: greenery, water and trees.



Created for the monument of "Mt. Fuji", the 10th anniversary event of Tokyo Midtown with the theme "JAPAN, THE BEAUTIFUL" and symbol of Japan's pride in the world, on the vast lawn space. Chipped and produced from 100 truckloads of fibre waste from Tokyo's street trees. After the project was finished, it was recycled as fertiliser, creating a recycling-oriented society.

TOKYO MIDTOWN 10th Anniversary "EDO-FUJI" - 2017
Credit : Tokyo Midtown Management Co., Ltd / NAKED Inc. / Rhizomatiks co., Ltd.



Christmas decorations at Central Embassy, Thailand's most luxurious shopping mall, which opened in 2014 on the site of the British Embassy in downtown Bangkok.

SIWILAI CITY CLUB - 2017
Credit : CENTRAL EMBASSY



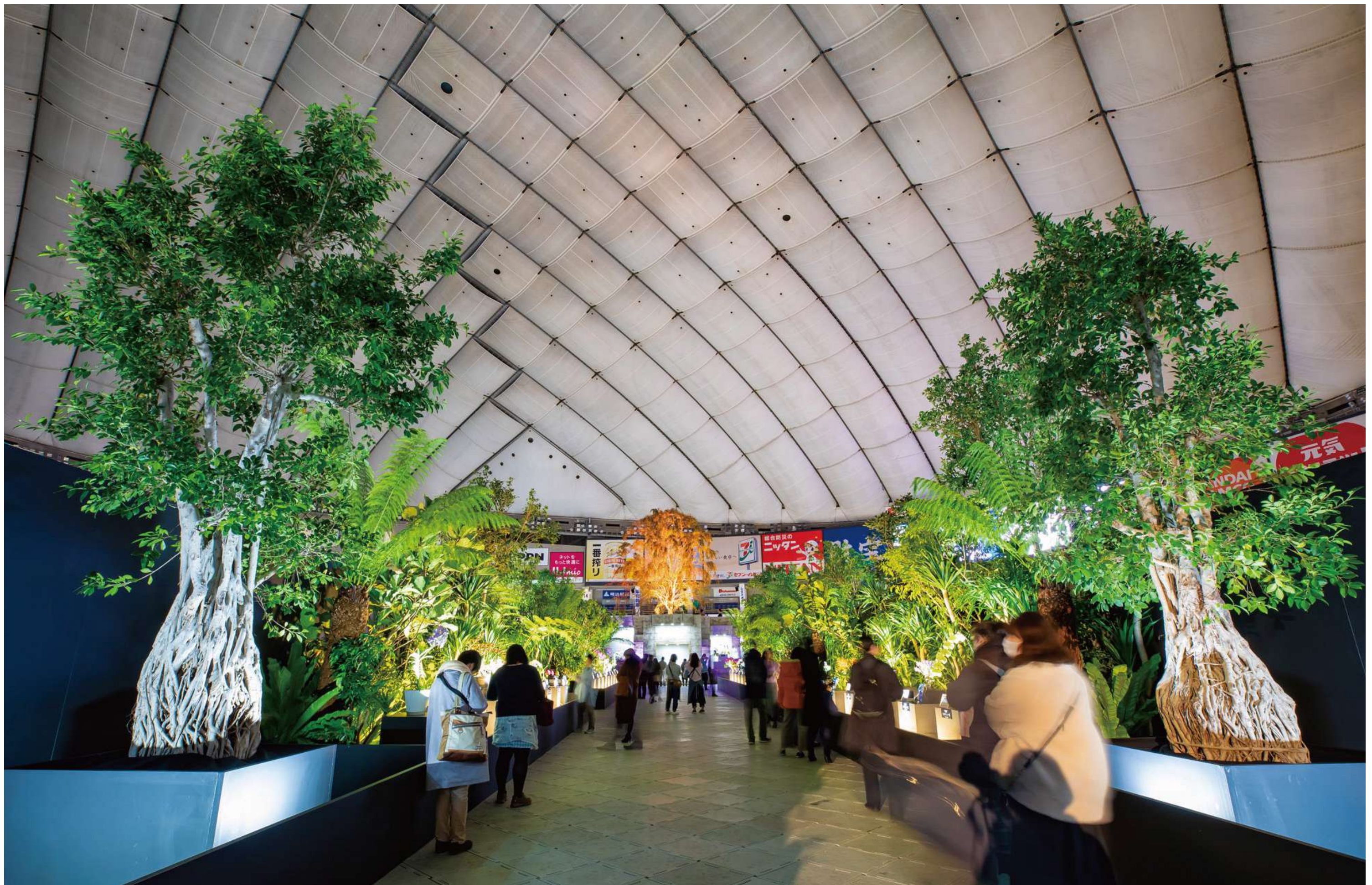
Collaboration with Kohei Nawa, who created the main programme for Roppongi Art Night 2016.

ROPPONGI ART NIGHT - 2016
Credit : Roppongi Art Night / Kohei Nawa

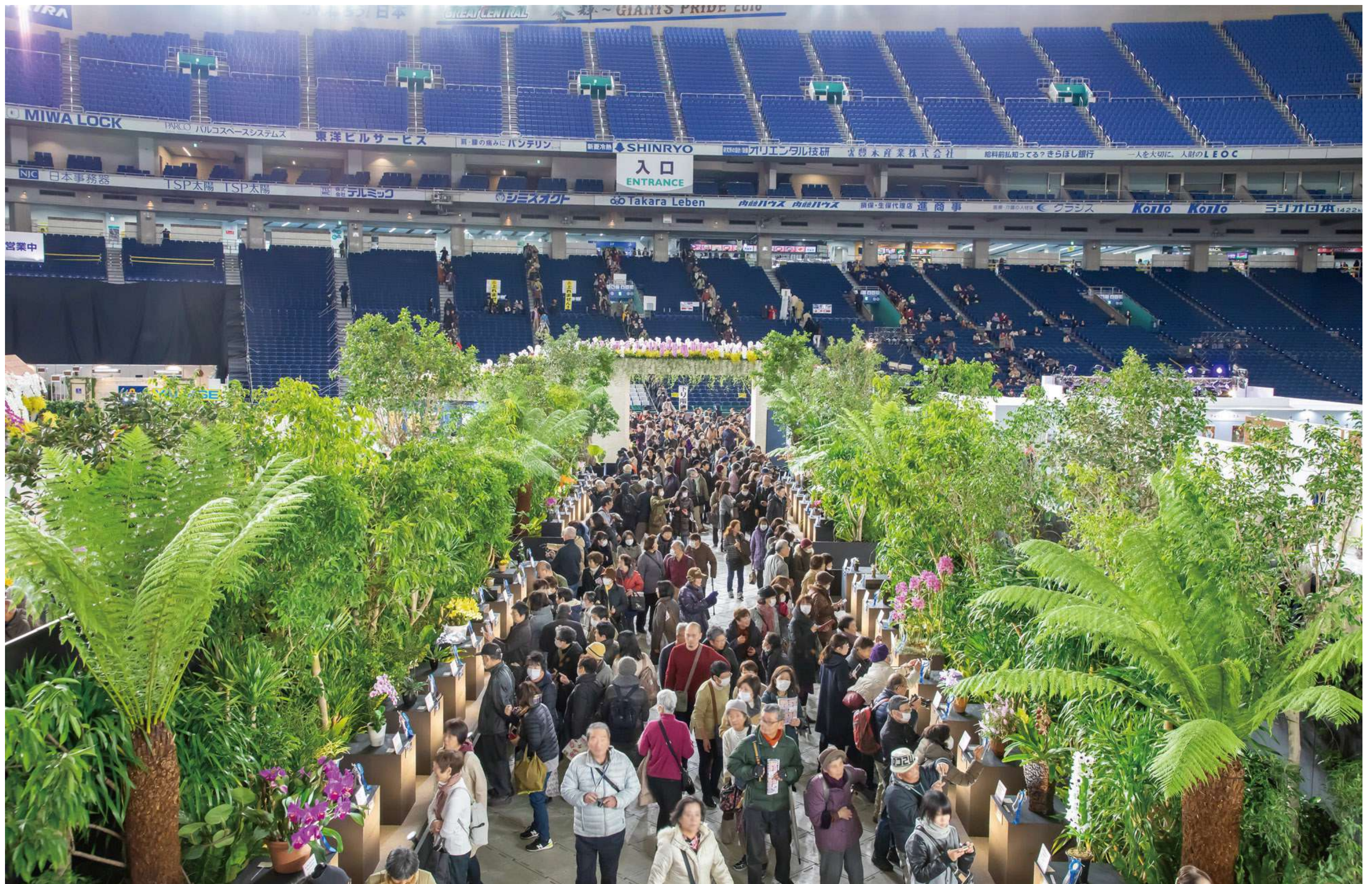


Installation of cacti from Shinshu by Sora Botanical Garden at 36th National Urban Greenery Shinshu Fair (Shinshu Flower Festa 2019 - Gift of the Northern Alps), the largest garden festival in Japan.

National Urban Greening Fair - 2019
Credit : Ministry of Land, Infrastructure, Transport and Tourism / Nagano Prefecture
Organization for Landscape and Urban Green Infrastructure
Art Club at Sugano Junior High School / Local Volunteers
Nagano, Japan



Created symbolic road for the World Orchid Show 2019 - Festival of Flowers and Greenery,
a large-scale international horticultural exhibition in Japan organised by the World Orchid Show Organising Committee
and supported by the American Orchid Society (AOS),
Royal Horticultural Society (RHS) and the World Orchid Congress Committee (WOC).



JGP International Orchid and Flower show - 2019
 JGP Internatioal Orchid and Flower Show Committee (The Yomiuri Shimbun / NHK / JGP International Orchid and Flower Show Organizing Committee / Tokyo Dome)
 Ministry of Foreign Affairs / Ministry of Agriculture, Forestry and Fisheries / Ministry of Environment
 Tokyo / Royal Horticultural Society (RHS) / American Orchid Association (AOS) / World Orchid Conference Committee
 Tokyo, Japan



Giant bird's nest installation appeared in the middle of Shibuya from New Year's Eve to New Year's Day in 2016, Using a large amount of thinned wood provided by a forest cooperative as the Chinese zodiac sign for 2017, the year of the rooster.

KDDI au “Be a bird!” - 2016
Credit : HAKUHODO Inc. / TOW co.,ltd.



In keeping with the strong concept of 'turn your arse up against common sense', the company provided a desert plant, the *Beaucarnea recurvata*, which can live for six months without water and soil, and presented it in the theme colour red.



Produced a plant expo in 2015 and 2016 that brought together more than 50 species of the world's amazing plants at the POLA MUSEUM ANNEX in Ginza, Tokyo.



PLANT PATTERNS FROM AROUND THE WORLD EXHIBITION, MATSUYA GINZA - 2016
Credit : NHK Promotions Inc. / NHK Enterprises Inc.



PLANT PATTERNS FROM AROUND THE WORLD EXHIBITION, MATSUYA GINZA - 2016
Credit : NHK Promotions Inc. / NHK Enterprises Inc.



Exhibition planned by NHK Group at Matsuya Ginza, and on the theme of "Botanical Patterns of the World"



Stage installation for Keali'i Reichel, Charismatic Hawaiian musician and nature-lover. stages of Japan Tour 2019.





Omotenashi Cherry Blossoms" bloomed for the opening party of the International Ophthalmology Congress, which was held in Japan for the first time in 50 years, and welcomed 20,000 visitors from 134 countries around the world.

34th World Ophthalmology Congress - 2014
Credit : 34th World Ophthalmology Congress



Produced the planting for the party celebrating the 20th anniversary of the Tokyo International Forum, Tokyo's leading convention and arts centre, and created an authentic Japanese garden for one night only, with 20 giant weeping cherry trees, controled to bloom in honour of the 20th anniversary.

20th ANNIVERSARY TOKYO INTERNATIONAL FORUM - 2017
Credit : Tokyo International Forum Co., Ltd.



Commemorate the 150th anniversary of the opening of the port of Kobe Meriken Park, 30-metre-long tree - the tallest organic tree in the world, which is bigger than the giant Christmas tree at Rockefeller Centre in New York, was installed in Japan. A total of 1.4 million people visited the tree during the period.



The Greatest Christmas Tree Project - 2017
 Credit :The Greatest Christmas Tree Project Committee / Kobe City / Himi City /Disney.PIXAR 「COCO」
 NAKED Inc. / Taro Hakase / Junichi Okada / Noriyuki Makihara / Shigesato Itoi
 KYOTO Philharmonic Chamber Orchestra / WADAIKO MATSUMURA-GUMI / Kumamon / etc.
 Kobe, Japan



The project involved the design and construction of the redevelopment of the precincts of Koyasan Kongo-sanmai-in Temple, a separate head temple of the Koyasan Shingon sect, located in Koyasan, Wakayama Prefecture. The temple is a lodging house and one of the components of the UNESCO World Heritage Site 'Sacred Sites and Pilgrimage Routes in the Kii Mountain Range'.



Seijun performed Japanese traditional flower offering at a Rakkei-Hoyo event (a memorial service to celebrate the construction of a temple, the completion of the Kyozo' s roof restoration) at an important cultural asset, the world heritage Koyasan, Kongo-sanmai-in, in Japan. The project was founded through cloud funding.



Project to plant cherry blossom trees from Tohoku which sprouted after the earthquake to the OECD (Organisation for Economic Co-operation and Development) headquarters in Paris by children of the OECD Tohoku School.

OECD Tohoku School - 2013
Credit : Organisation for Economic Co-operation and Development



A project of DIGNIO, a high-end magazine published by Nikkei BP, under the direction of art director Natsuki Ando, plants were selected to match the theme of luxury watches from world-leading brands such as Hermès and Cartier.

VISUAL WORKS

”DIGNIO” SPOKES WATCH - 2013
Credit : Nikkei Business Publications Inc. / Naohiro Tsukada / Cartier / PATEK PHILIPPE / OMEGA / HUBLOT / PIAGET / MONTBLANC / HERMES



NHK TAIGA FANTASY SERIES “Seirei No Moribito” - 2016
Credit : NHK Enterprises Inc.

Supervised the title backdrop and opening film for the NHK historical drama Onna Jōshu Naotora, as well as providing commentary for the soundtrack and other productions.



NHK TAIGA DRAMA SERIES “Onna Joshu Naotora” - 2017
Credit : EPOCH Inc. / Furuya Haruka / NHK Enterprises Inc.

Provided plants and related ideas for the title backdrop and opening film of NHK's epic fantasy 'The Guardian of the Spirit'. The key visual, the 'Closing Killer Tree' akou, was featured on the jacket of the original soundtrack.



At the request of Ambassador Ahmed Alaita Ali of the Embassy of the Republic of Djibouti in Japan, a field survey and advisory in Djipti for the conservation of the Dai Forest, the oldest forest in Africa.

Day Forest National Park - 2018
Credit : Ambassae de Djibouti au Japan



Attended the “2nd INTERNATIONAL SCIENTIFIC-PRACTICAL CONFERENCE “ in Voronezh, Russia, invited as the only Asian speaker and gave a lecture about the Japanese traditional garden spirit of “OMOTENASHI” for the future possibility of the urban landscape industry. Also, be a part of juries for “VIII VORONEZH INTERNATIONAL FESTIVAL OF GARDENS AND FLOWERS “

2nd INTERNATIONAL SCIENTIFIC-PRACTICAL CONFERENCE - 2018
Credit : THE DEPARTMENT OF NATURAL RESOURCES AND ENVIRONMENT, VORONEZH REGION



**It's like a gift, gift from the nature.
Every single journey gives me a millions of inspiration.**

Seijun Nishihata

CEO of SORA BOTANICAL GARDEN Project Inc.

Seijun Nishihata is Japan’s most celebrated plant hunter and landscape designer. For over 18 years, Seijun has brought people closer to nature through the power, language, and beauty of plants.

Seijun founded SORA BOTANICAL GARDEN Project in 2012. He led the Japanese horticultural studio to an international following, with botanical experiences and partners found throughout the globe. His collaborators include government institutions, royal families, and companies such as SONY, FENDI, NISSAN, WEDGWOOD, Gardens by the Bay, Henderson Development, Central Group, NHK HYATT, SK Group, and more.

Seijun’s collection of plants at SORA exceeds over 1,000 varieties, and the company delivers on average over 250t of plants internationally and domestically each year.

When Seijun is not fielding requests for projects, he works as a botanical consultant and produces his own innovative, unique events. Seijun has written 4 books, and given countless lectures and interviews to international media. Most recently Seijun produced the Greatest Christmas Tree project in Kobe, an event where Seijun brought the world’s largest organic Christmas tree to an audience of over 1.4 million visitors.

Apart from serving as the creative lead and chief consultant behind all of SORA’s projects, Seijun is the Green Director of Tokiwa Museum. Seijun has served as a Kyushu National Museum Advisor, Ambassador of the City of Kawanishi, and as the Director of Redevelopment of the City of Ikeda. He was honored by the mayor of Kawanishi, a recipient of 17th Urban Greening Mechanism Chairman’s Award and the City of Kawanishi Cultural Award, and named as the Change Maker of the Year in 2015 by Cartier and Nikkei BP. Seijun has even modeled a fleece jacket for Uniqlo.

Seijun was born into a family with a history of over 150 years in the horticultural industry. From a young age he could be found hiking in the pursuit of awe-inspiring plants. Nowadays, Seijun can be found with his wife and two children — climbing trees, splashing in rivers, and surfing. His love of nature is at the center of everything he does.



- HONORS & AWARDS
- City of Kawanishi Cultural Award

Change Maker of the Year 2015 By Cartier and Nikkei BP

City Development Ambassador of KISELA KAWANISHI

Green Director of Tokiwa Museum

Director of Redevelopment of the City of Ikeda

Kyushu National Museum Advisor

SORA BOTANICAL GARDEN Project is a Japanese horticultural studio led by Seijun Nishihata.

SORA sources and builds inspired plant-based experiences around the world. The studio is known for experiential landscapes, rare plant import/export, and plant expertise.

SORA is headquartered at its 11-acre Osaka mountaintop farm with 5 greenhouses and extensive grounds with over 1,000 varieties of plants. SORA also has a Tokyo information center and cafe located at Yoyogi VILLAGE.



HONORS & AWARDS

Awarded to SORA BOTANICAL GARDEN Project Inc., Seijun Nishihata, or the project we worked for.

17th Urban Greening Mechanism Chairman’s Award
- Atre Ebisu West Building KUCHUKAEN

iF GOLD AWARD 2020
- GINZA SONY PARK

CLIENTS

Amazon	Henderson Land Development Company Limited	Sama Art International
ANA	HOIS TEN BOSCH	SK Group
BALLY	Kiyomizu-dera Temple	SONY MARKETING
CENTRAL GROUP	Lihpao Land - Taiwan	TOKYO MIDTOWN
Centrepont	Loewe	TOYOTA
DENTSU	Louis Vuitton	UNICEF
Djibouti Embassy	Mitsui Fudosan	UNIQLO
FENDI	New World Development Company Limited	WEDGWOOD
Gardens by the Bay	NHK	3.1 Phillip Lim
Goodman	NISSAN	etc.
Goop	OECD	

BOOKS

PLANT HUNTER 2011 Tokuma Shoten Publishing	HATSUMIMI SHOKUBUTSUEN 2016 Tokyo Shoseki
SORAMIMI SHOKUBUTSUEN 2013 Tokyo Shoseki	SORAMIMI SHOKUBUTSUEN 2017 New Star Press - China
OSHIETE KURETA NOHA SHOKUBUTSU DESHITA 2015 Tokuma Shoten Publishing	SORAMIMI SHOKUBUTSUEN 2017 ON Publishing - Taiwan

RELATED BOOKS

SAKURA PROJECT 2012 Matoi Publishing	THE GARDENS OF EDEN 2020 Gestalten - Germany
PLANT HUNTER SEIJUN NISHIHATA 2015 Shogakukan Creative	

